

MODEL #  
**CTB-SN**  
TECHNICAL SPECIFICATION



MODEL #:	WATTAGE:	VOLTAGE:	KELVIN:	SIZE:
TECHNOLOGY:	ACCESSORIES:			
PROJECT:	NOTES:			
TYPE:	AREA:			

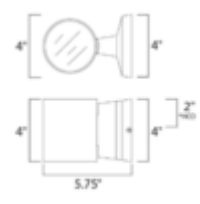
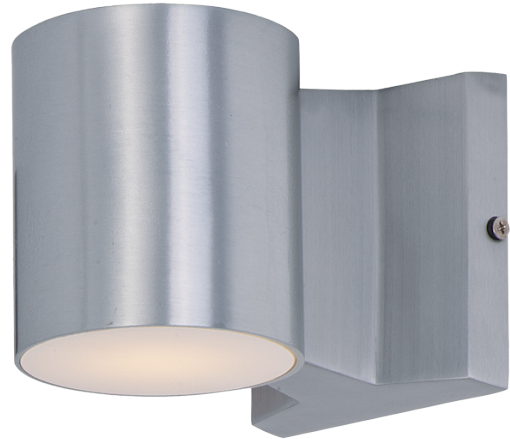
**FEATURES** **PRODUCT IMAGE**

**APPLICATION**

- Indoor
- Outdoor
- Wet

**LOCATION**

- Wet



**LIGHT PROPERTIES**

Available Kelvin Options:



<b>TESTED</b> LM80 AND LM82	<b>CRI</b> 80+	<b>LIFE HOURS</b> 50,000
--------------------------------	-------------------	-----------------------------

WATTAGE
4.5

VOLTAGE
Standard: ND - 120V NON DIMMABLE



**ASL LIGHTING**  
725 East state St. Trenton, NJ 08609 | info@aslightng.com | www.aslighting.com  
TOLL FREE: 800-1101-1101 | LOCAL: 718-369-1100 | Shipping & Receiving: 322 Monmouth Street, Trenton, NJ, 08609  
Specifications and dimensions are subject to change without notice / Consult your ASL lighten representative.  
© Copyright © 2026 ASL Lighting Inc. All rights reserved.



Approval upon request

# STANDARD OPTIONS

**STANDARD BASE CONSTRUCTION**

Cast Aluminum


**STANDARD LENS**

Clear


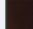
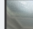

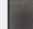


**STANDARD FINISH**

Satin Nickel

MODEL #CTB-SN ORDER FORM

WATTAGE	VOLTAGE	KELVIN	SIZE
W4.5 - 4.5	Standard Voltage: ND - 120V NON DIMMABLE	 30K	W4 - W4 H4 Extension 5 3/4

CUSTOM FINISH OPTIONS

 AFBA Brushed Aluminum    
  AFGZ Gloss Bronze    
  AFPC Polished Chrome    
  AFSB Satin Brass    
  FBZ Bronzestone  
 FMB Matte Black    
  FW White

*Not seeing what you're looking for? Contact us to discuss more options.*



**ASL LIGHTING**

725 East state St. Trenton, NJ 08609 | info@aslightng.com | www.aslighting.com

TOLL FREE: 800-1101-1101 | LOCAL: 718-369-1100 | Shipping & Receiving: 322 Monmouth Street, Trenton, NJ, 08609

Specifications and dimensions are subject to change without notice / Consult your ASL lighten representative.

© Copyright © 2026 ASL Lighting Inc. All rights reserved.



Approval upon request